

# Laurel Ridge

THE ESTATES

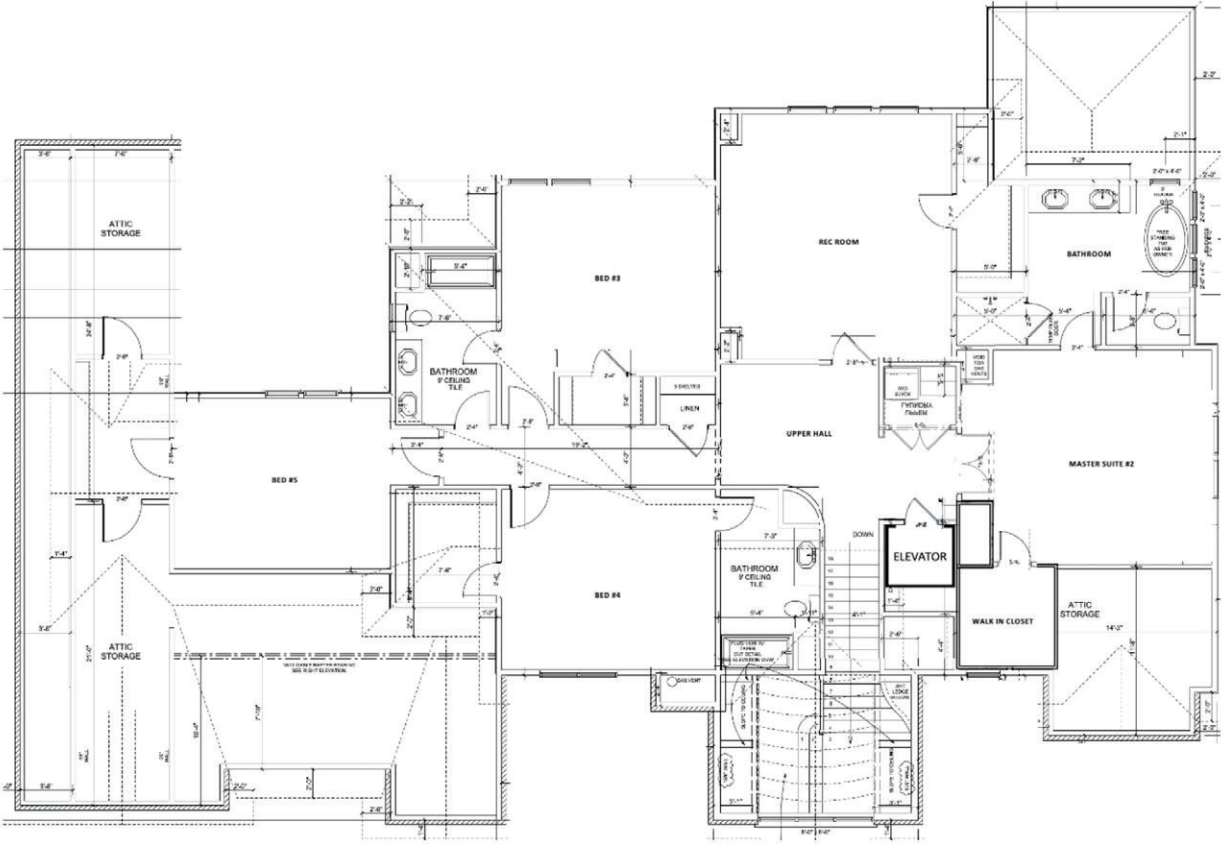
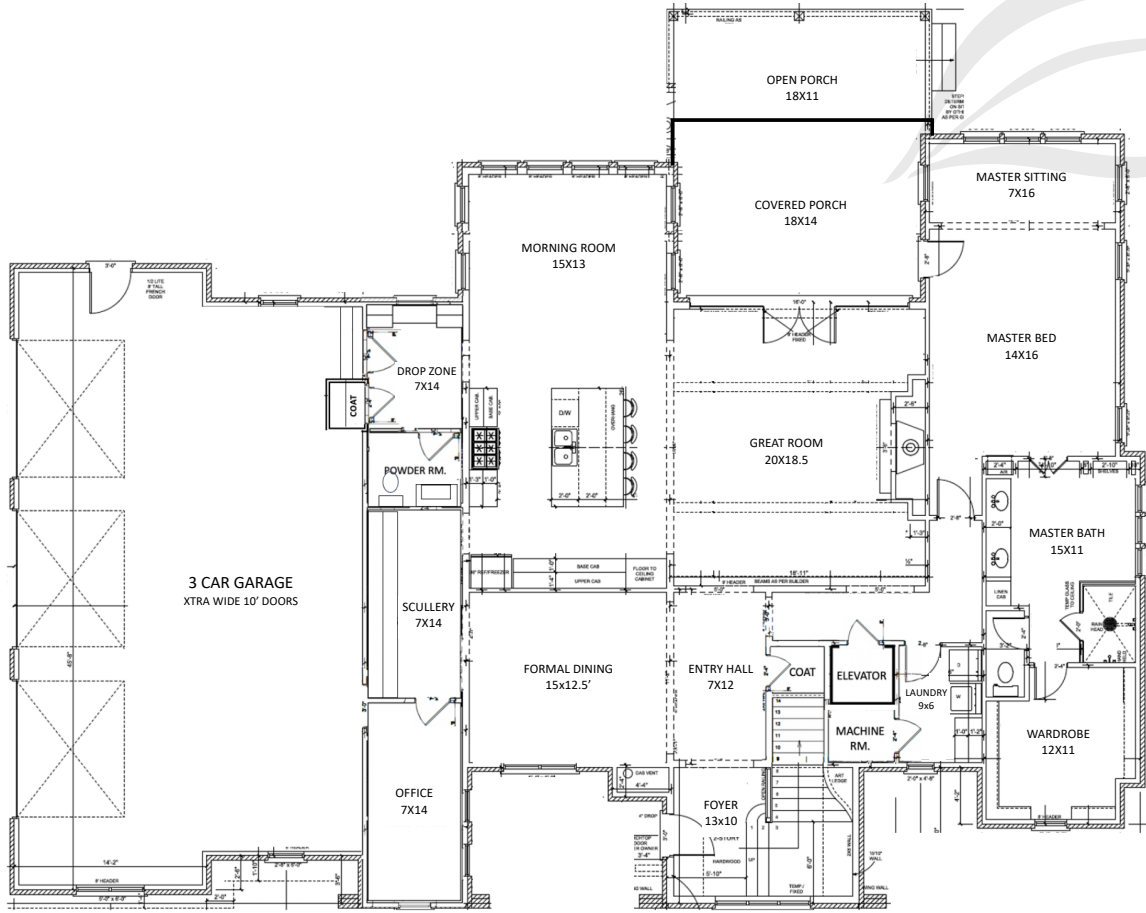
SOPHISTICATION • PRIVACY • CONVENIENCE



## Dunning Custom Homes

### ISLA

Homesite 6 // 35 Ridgeline Court • Pittsboro, NC  
4 BDR // 3.5 BA // 4365 SF // 3.1 Acres  
First Floor Primary Suite with Spa Bath // Elevator  
Covered Porch & Open Porch // 3 Car Garage  
MLS# 10000852 // \$1,879,000



## Dunning Custom Homes

### ISLA

The floor plan may vary depending on elevation selected. Please consult with Sales Associate for details and a complete list of available options. Renderings are for illustrative purposes only and convey an artist's conception which may vary with actual construction plan. Floor plans and specifications are approximate and are subject to change without notice. (1/24)