

Laurel Ridge

THE ESTATES

SOPHISTICATION • PRIVACY • CONVENIENCE



Poythress Construction Company, Inc.

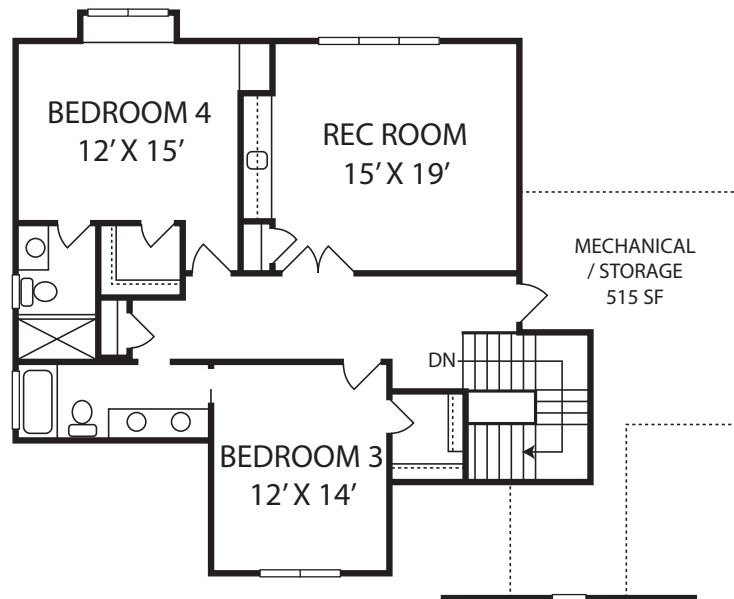
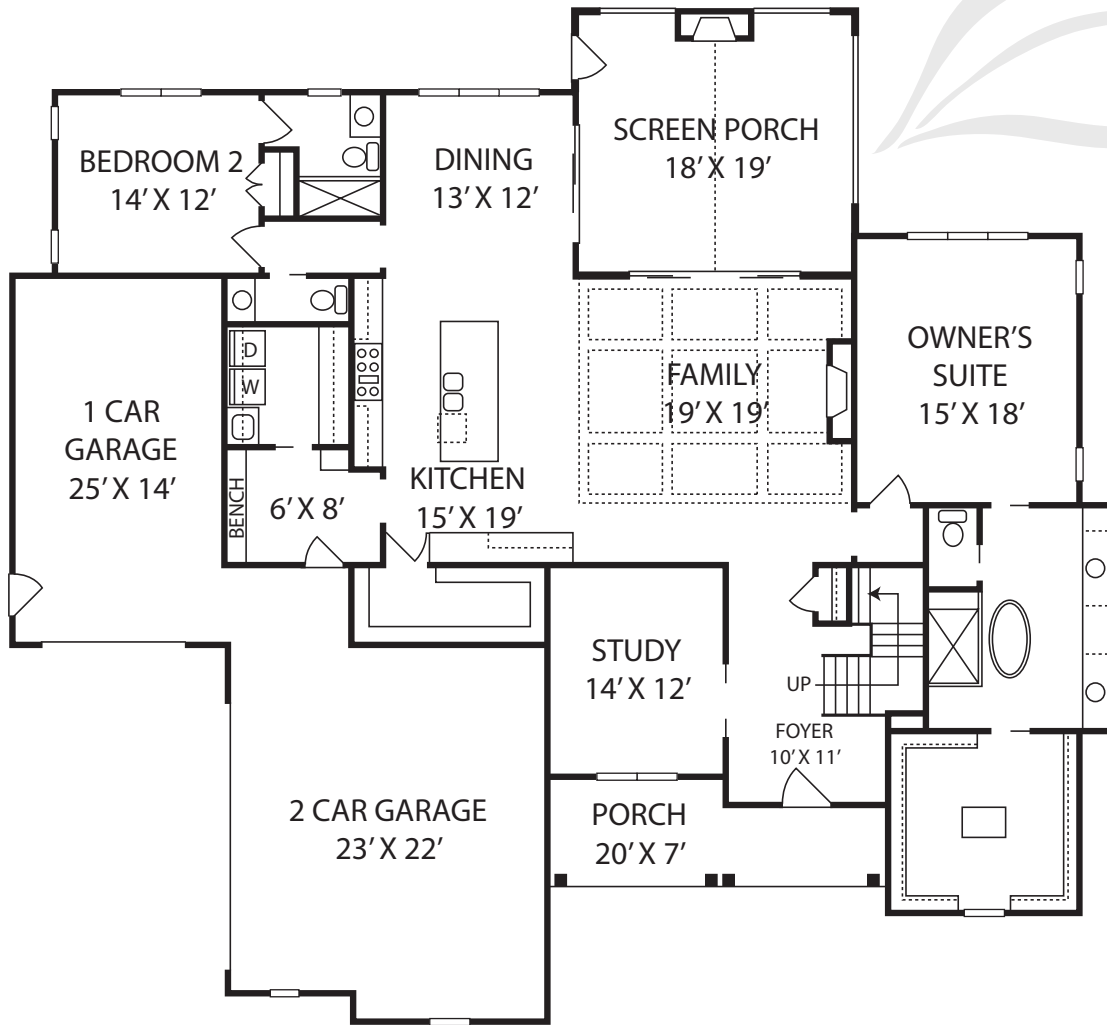
THE NOLAN

Homesite 32 // 115 Blufftonwood Drive • Pittsboro, NC

4 BDR // 4.5 BA // 3561 SF // 3.9 Acres

First Floor Owner's Retreat // First Floor Bedroom with Private Bath
Study/Office Main Level // Screen Porch with Fireplace // 3 Car Garage

MLS# 2422059 // \$1,100,000



Poythress Construction Company, Inc

THE NOLAN