

Laurel Ridge

THE ESTATES

SOPHISTICATION • PRIVACY • CONVENIENCE



Sadler Construction

THE BENTONVILLE

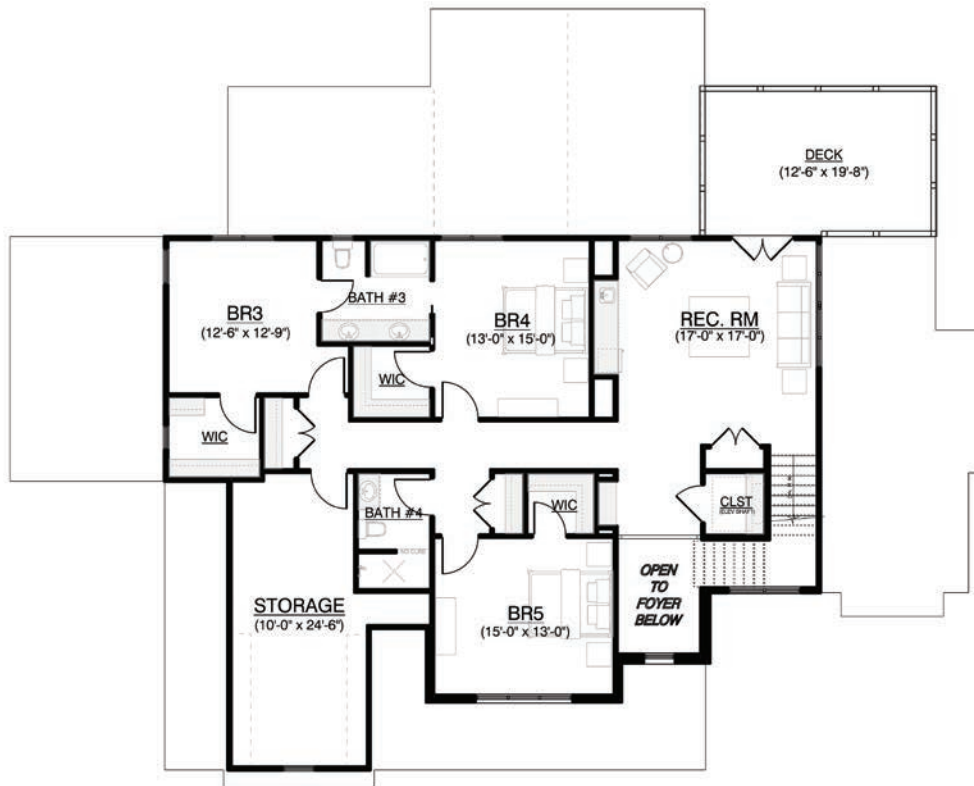
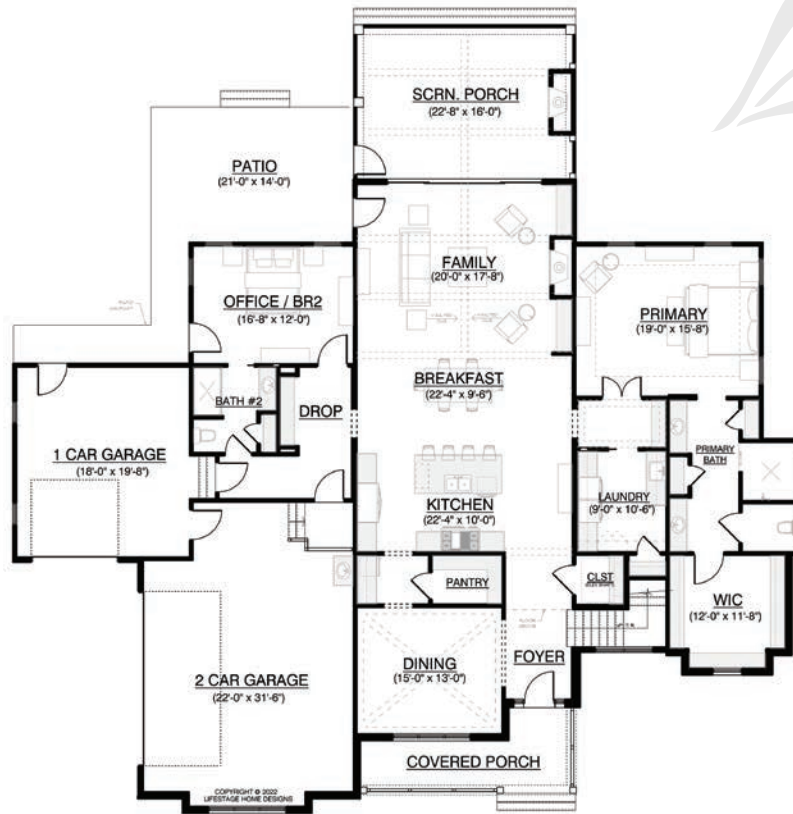
Homesite 48 // 348 Blufftonwood Drive • Pittsboro, NC

5 BDR // 4 BA // 4191 SF // 3.0 Acres

First Floor Primary Suite with Luxurious Bath // Screened Porch with Fireplace

Second Floor Recreation Room Leads to Fabulous Deck // 3 Car Garage

MLS# TBD // \$TBD



Sadler Construction

THE BENTONVILLE