

## The Finley

Bedrooms: 3-4  
Baths: 2.5-3.5



2,353 sq. ft.



2,339 sq. ft.



2,353 sq. ft.

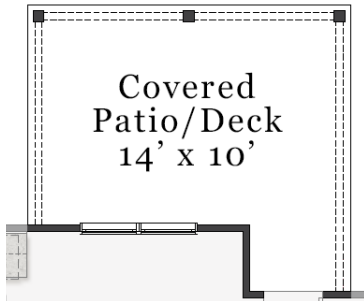


2,398 sq. ft.

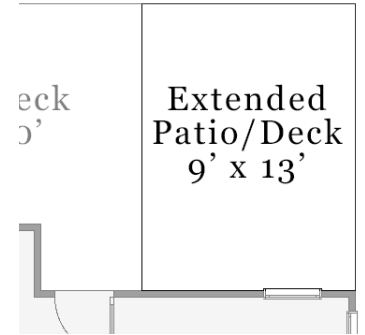


A PERCENTAGE OF EVERY HOME SOLD GOES TO SUPPORT ALZHEIMER'S RESEARCH AND CARE.

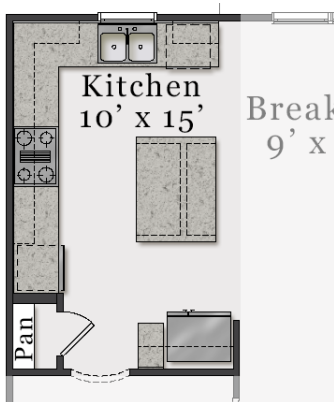
# First Floor



*Opt. Covered Patio/Deck*



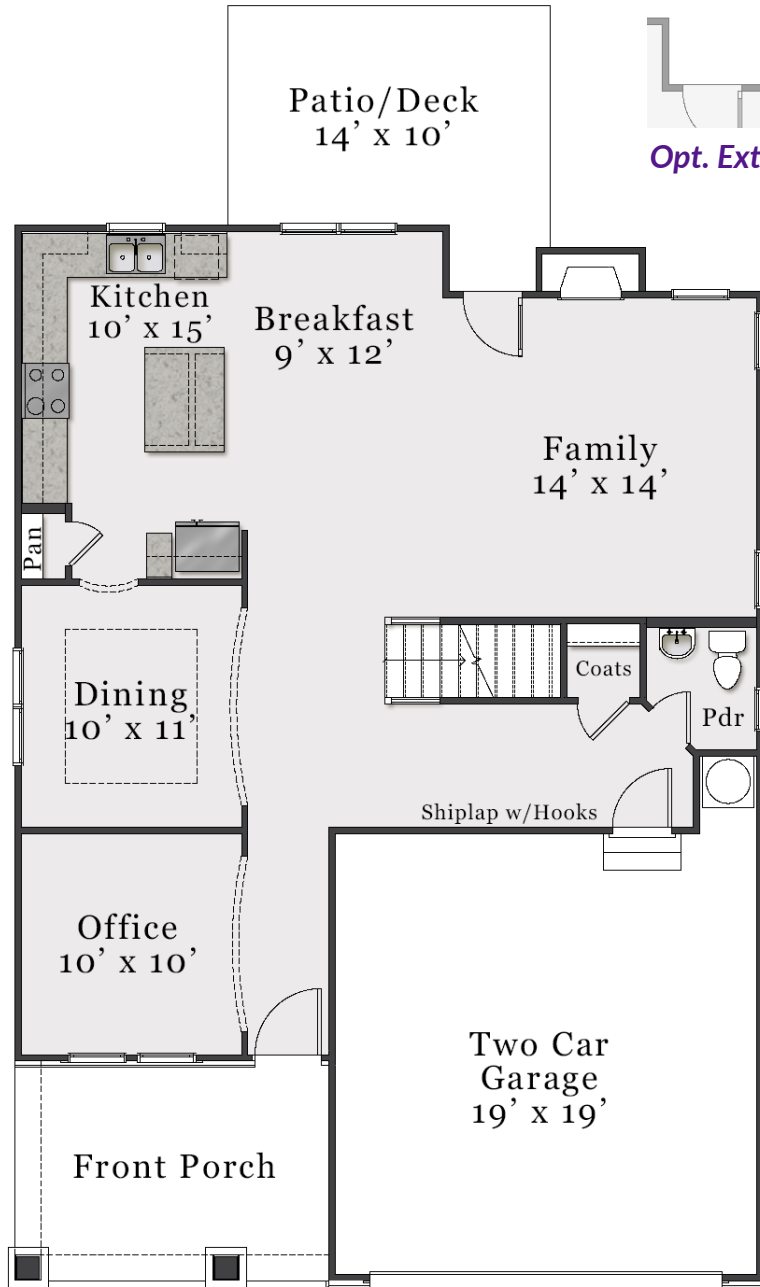
*Opt. Extended Patio/Deck*



*Opt. Deluxe Kitchen*

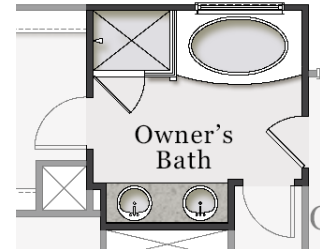
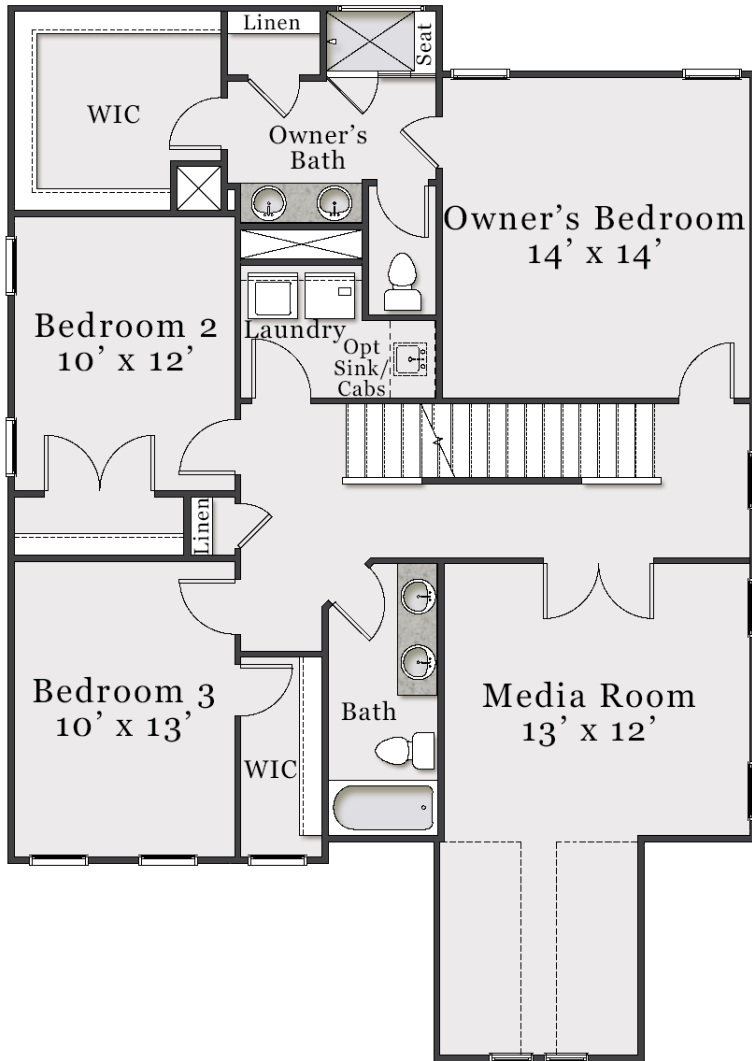


*Opt. Office Double Doors*

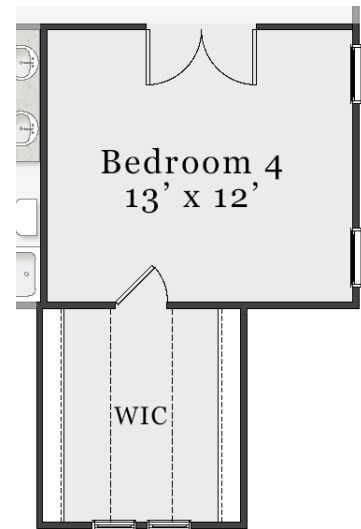


The floorplan shown is the Craftsman elevation.  
Other elevations are similar but may include minor layout and square footage differences.

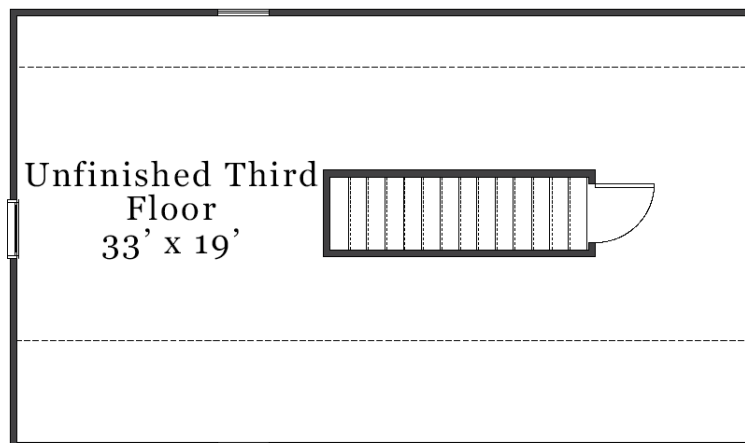
# Second & Third Floor



*Opt. Deluxe Owner's Bath*



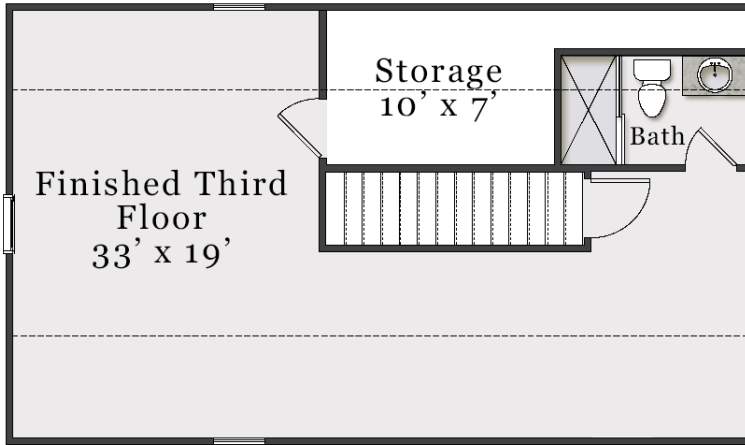
*Opt. Bedroom 4*



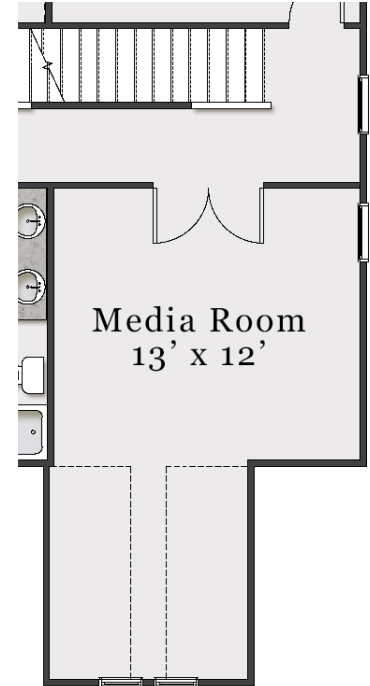
*Unfinished 3rd Floor (Approx. 680 sq. ft. unfinished)*

The floorplan shown is the Craftsman elevation. Other elevations are similar but may include minor layout and square footage differences.

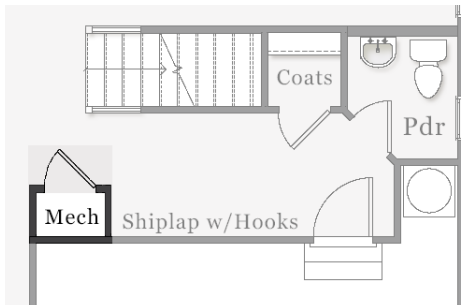
# Plan Options



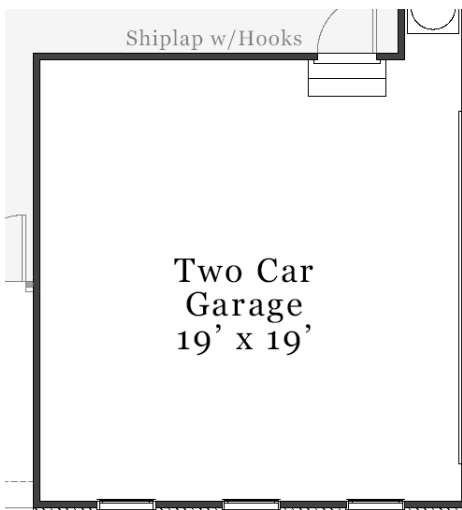
*Opt. Finished 3rd Floor with Bath (Approx. 535 sq. ft.)*



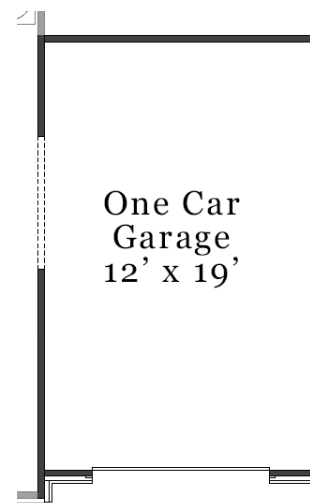
*Single Window in Media Room with Opt. Third Bay Garage*



*Opt. Mech. Closet included with Finished 3rd Floor*



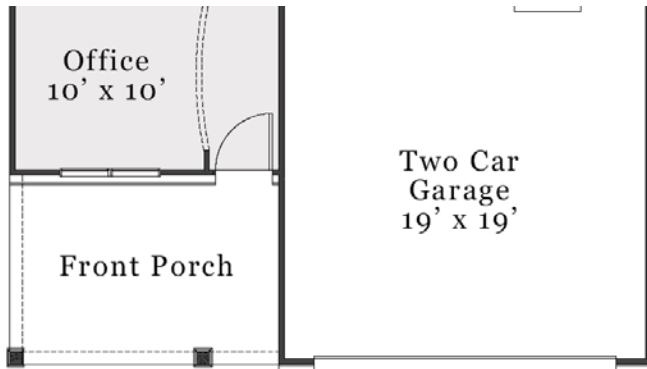
*Opt. Side Load Garage*



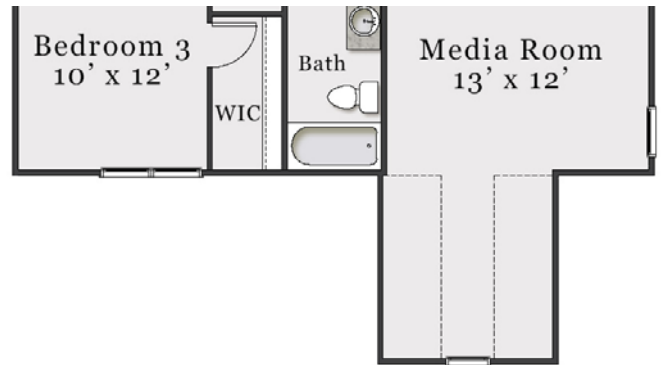
*Opt. Third Bay Garage*

The floorplan shown is the Craftsman elevation. Other elevations are similar but may include minor layout and square footage differences.

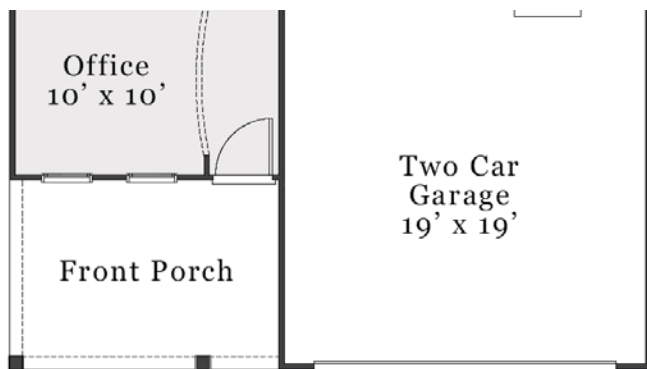
# Elevation Specific Base Floors



*Classic First Floor*



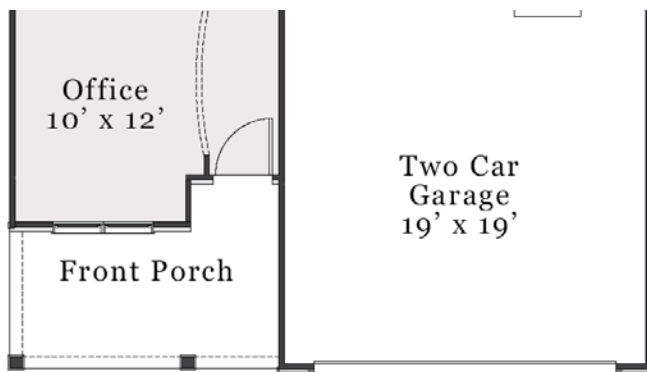
*Classic Second Floor*



*Coastal First Floor*



*Coastal Second Floor*



*European First Floor*



*European Second Floor*