

# Laurel Ridge

THE ESTATES

SOPHISTICATION • PRIVACY • CONVENIENCE



## Dunning Custom Homes

### CREEKSIDE MANOR

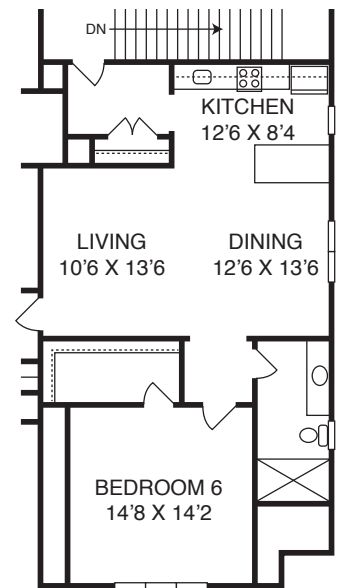
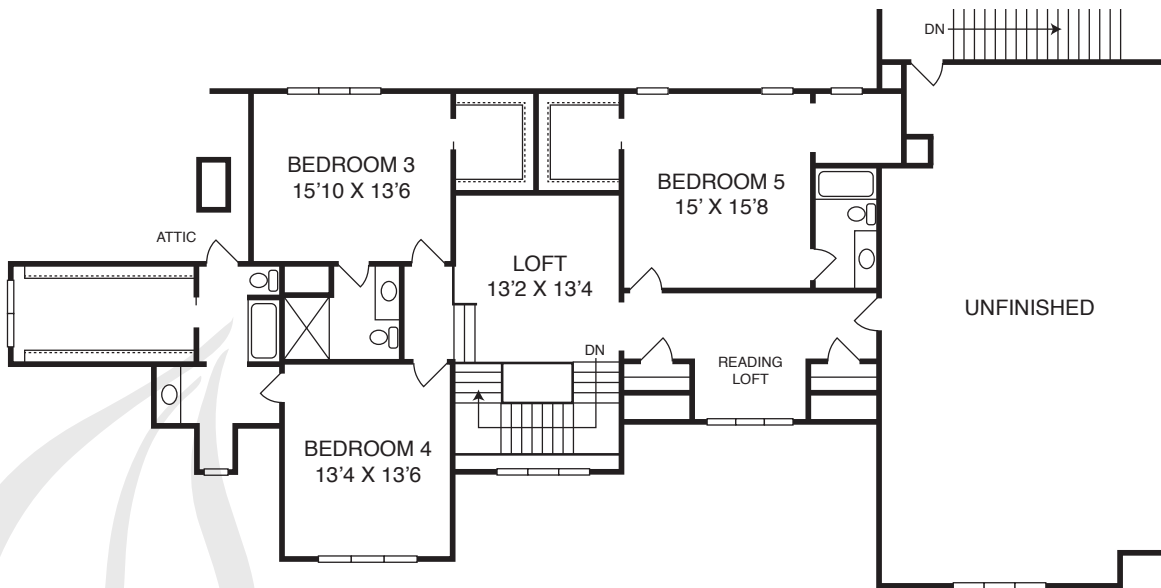
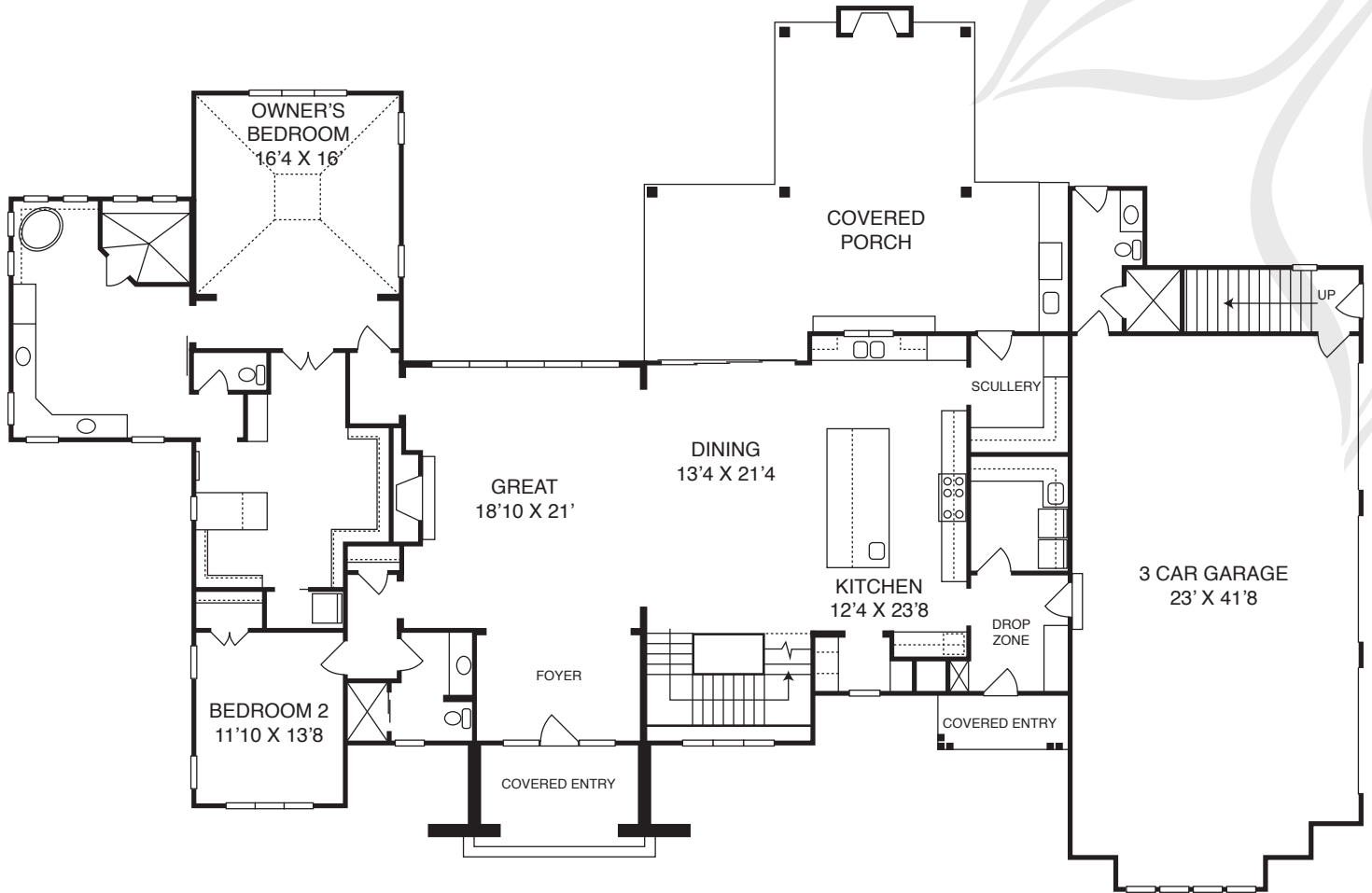
Homesite 15 // 175 Clear Springs Court • Pittsboro, NC

5 BDR // 5 BA // 4677 SF // 3.6 Acres

First Floor Primary Suite with Spa Bath // Optional 1000 SF Apartment with Separate Entrance

Amazing Covered Porch with Fireplace // 3 Car Garage

MLS# 10002071 // \$2,199,000



OPTIONAL

## Dunning Custom Homes

### CREEKSIDE MANOR

The floor plan may vary depending on elevation selected. Please consult with Sales Associate for details and a complete list of available options. Renderings are for illustrative purposes only and convey an artist's conception which may vary with actual construction plan. Floor plans and specifications are approximate and are subject to change without notice. (1/24)